



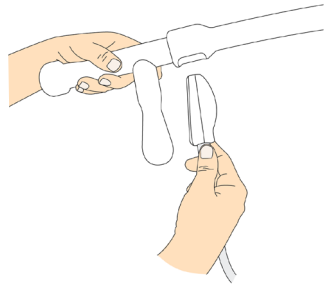
Easi-Scan Probe Introducer

Probe Fitting Instructions for Convex Probe

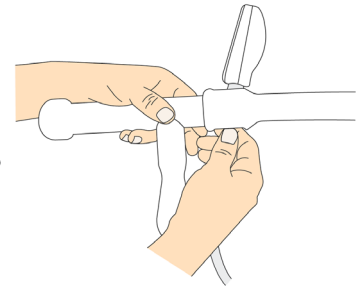
The BCF Introducer for the Easi-Scan probe, provides a firm yet responsive aid to insertion and manipulation of the rectal transducer. The quick-release design allows for fitting and removal of the probe within seconds. Cleaning up is simplified as the smooth finish can quickly be cleaned and disinfected. The shaft of the Introducer has been heat-shaped to closely follow the rectal wall.

FITTING:

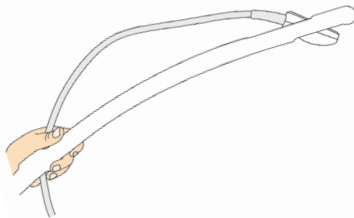
1. Slide the head of the probe into the opening located underneath the introducer.



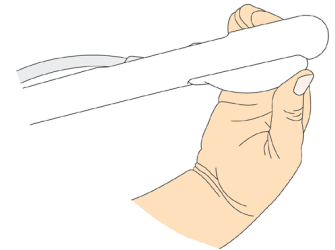
2. Feed through until the probe head and cable are through the opening.



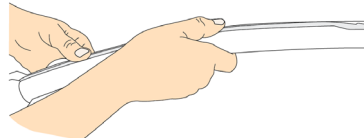
3. Slide the nose of the Easi-Scan probe down the introducer. Feed through the gap until it protrudes underneath.



4. Lock probe into place by pressing firmly upwards.

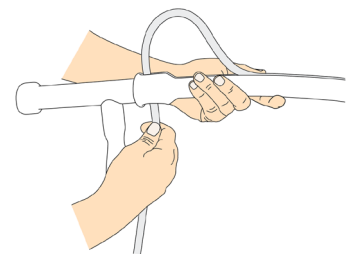


5. Press the cable into groove along the shaft and handle. If the cable is tight, use ultrasound gel to ease in.

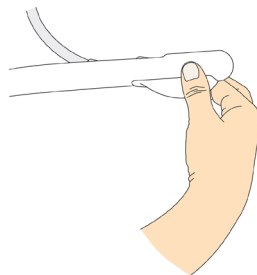


REMOVAL:

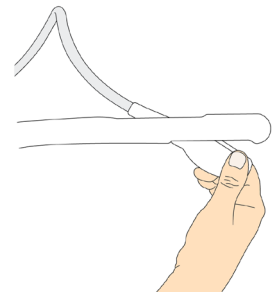
1. Make a small loop in the probe cord by feeding the cable up through the gap.



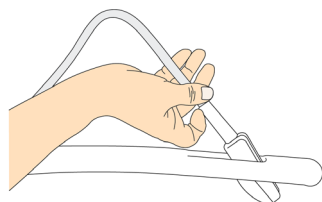
2. To release probe head, pull front section of the probe down. DO NOT pull on cable as this can damage connection.



3. Remove probe head by holding firmly and feeding through opening of introducer.



4. Gently remove the probe by feeding through openings at front and end of the introducer.



For More Please Contact Our Distributor

Australia: +61 3 9874 7543

New Zealand: +64 9 257 1212

Email: sales@bcfultrasound.com