



Equine Healthcare

Product Catalogue



Medical Imaging

Vetus E7

Veterinary Diagnostic Ultrasound System

Best Design

8 hours scanning powered by U-Bank

The lightest and thinnest design in the industry

3kg 44mm



Advanced Platform
Powered by **ZST+**

Comprehensive Application

Tendon	Ophthalmology	Abdomen	Cardiology	Reproduction
L13-3Ns	L16-4Hs	C5-1s	P4-2s	6LE5Vs



Direct Workflow

1 second selection of Equine exam mode



C5-1s						
L13-3Ns	5-15(kg)	>15(kg)				
	Reproduction	Abdomen	Abdomen	Abdomen	Abdomen	Abdomen
	MSK		Reproduction	Reproduction	Reproduction	Reproduction
			MSK	MSK	MSK	MSK



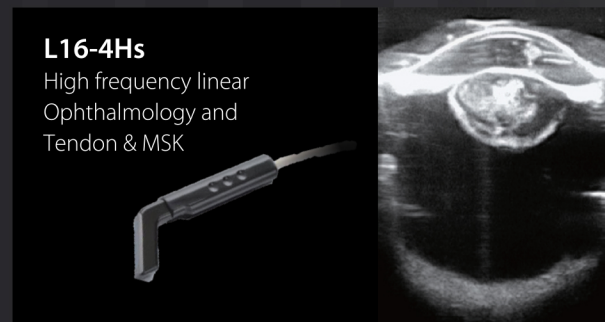
Equine Healthcare Total Solution

Laboratory Application

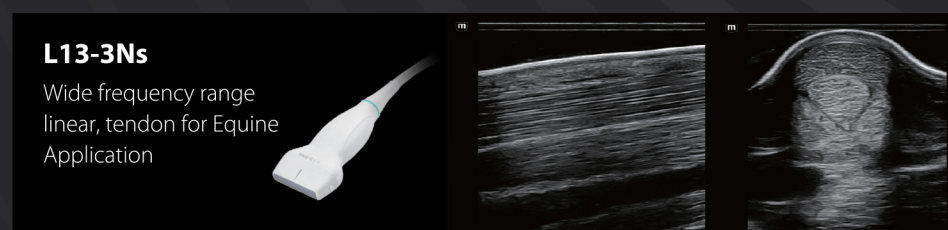
Hematology, Biochemistry



Ophthalmology Application

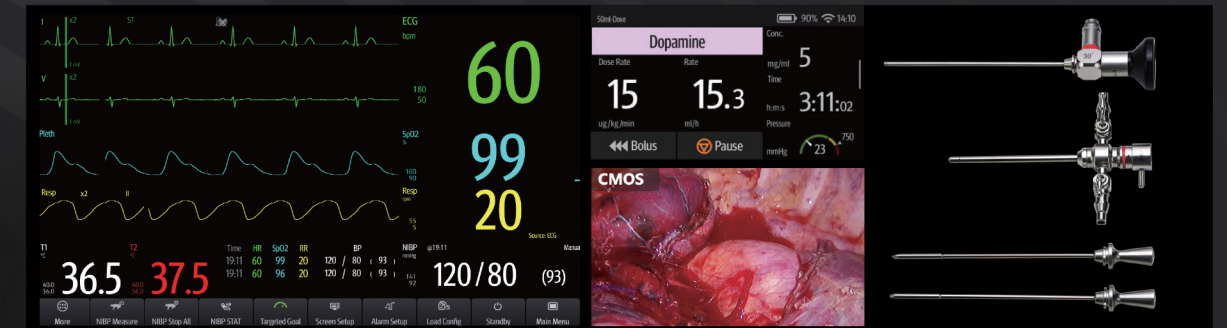


Tendon Application



OR Application

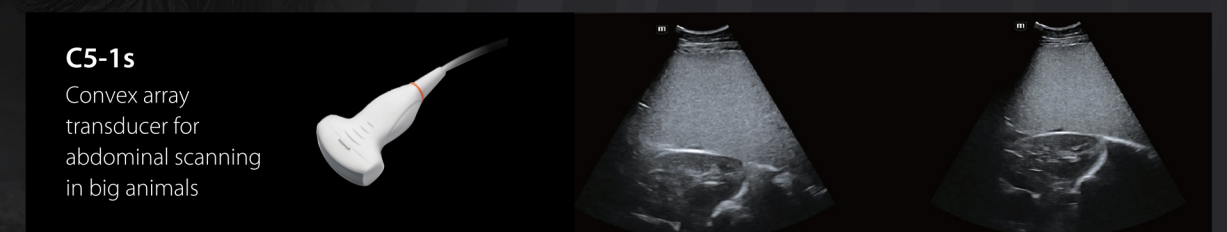
Monitoring, Infusion & Syringe, Endoscopy



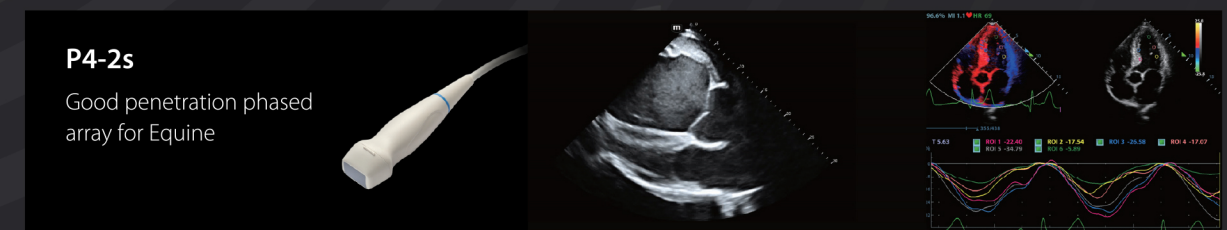
Reproduction Application



Abdominal Application



Cardiology Application



OR Solution

ePM 12M Vet

Portable Multi-Parameter Veterinary Monitor

With functioning intelligence and an easy-to-use operating system, the ePM 12M Vet provides excellent performance and precise physiologic parameters. Its modular design and high-end parameters offer practitioners more choices in practical applications.

- Smart & Simple
- Excellent Performance
- Reliable Quality



BeneFusion eSP/eVP/eDS Vet

Veterinary Infusion & Syringe Pump Series

The e series vet infusion pump with 3.5" capacitive screen allows all parameters and common infusion statuses to be viewed easily and without having to navigate between menu layers. The pump status can also be remotely viewed from Mindray CMS Vet software. Dynamic pressure monitoring, SmartRapid™, and SmartAIR™ technologies safeguard patients from pump error.

- Efficient and Convenient
- Enhanced Safety
- Easy to Manage

Vetina CS3

Veterinary Rigid Endoscope System

The Vetina CS3 is specially developed for veterinary practices. With a full HD camera system, it is applicable in a wide range of scenarios. The 27" full optical bonding medical monitor and powerful 3-chip image processing device provides greater richness of details, and the lightweight hand piece offers a more comfortable operating experience.

- Medical Quality
- Veterinary-Specific



HyLED 580 Vet

Veterinary LED Surgical Light

Incorporating Mindray Animal Medical's high-end LED surgery technology, the HyLED 580 Vet series provides LED illumination with 3 installation options: wall hanging, ceiling, or mobile, meeting the specialized needs of different hospitals. An antibacterial coating inhibits the growth of staphylococcus aureus to help prevent intraoperative contamination and nosocomial infection, aiding animal safety.

- Antimicrobial Design
- Excellent Illumination

Laboratory Diagnostics

Large Sample Volume

BC-5000 Vet

Auto Hematology Analyzer

BC-5000 Vet, the 5-part hematology analyzer with state-of-the-art technology and simple operations, is a true hematology flagship.

- Dedicated Algorithms for Animals
- Accurate 5-Part WBC Differentiation



BS-240 Vet

Chemistry Analyzer

BS-240 Vet ensures the test result's accuracy and reliability and offers the customized test panels.

- Reliable Performance
- Batch Loading Samples Flexible Menu
- Flexible Menu



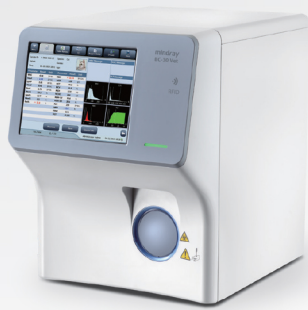
Small Sample Volume

BC-30 Vet

Auto Hematology Analyzer

The BC-30 Vet, an accurate hematology analyzer, it is compact yet powerful, full-featured and affordable. Providing blood cell analysis for horses.

- Accurate Measurement of Eosinophil
- Reliable Performance in Cold Environment
- Weekly Instead of Daily Maintenance



Vetube 30

Veterinary Chemistry Analyzer

Vetube 30 uses advanced microfluidic technology. The diluent and lyophilized reagent preset in the rotors. Vetube 30 preset horse reference range.

- Accurate Test
- Integrated Design
- Maintenance Free



Search Mindray Animal Medical

www.mindrayanimal.com
service@mindrayanimal.com

P/N:ENG-Equine Healthcare-210285X6P-20220708
©2022 Shenzhen Mindray Animal Medical Technology Co., Ltd. All rights reserved.

